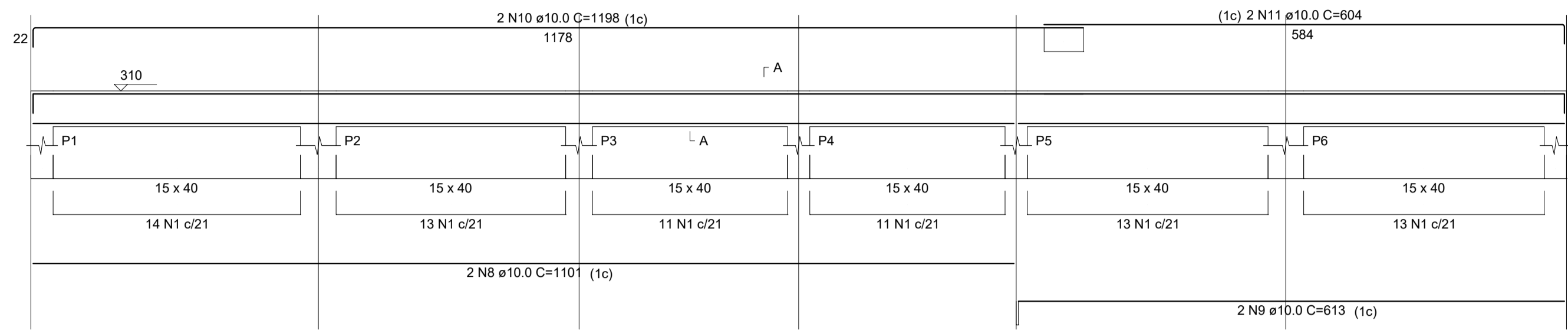
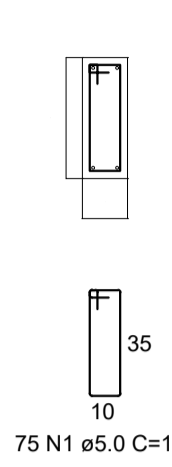


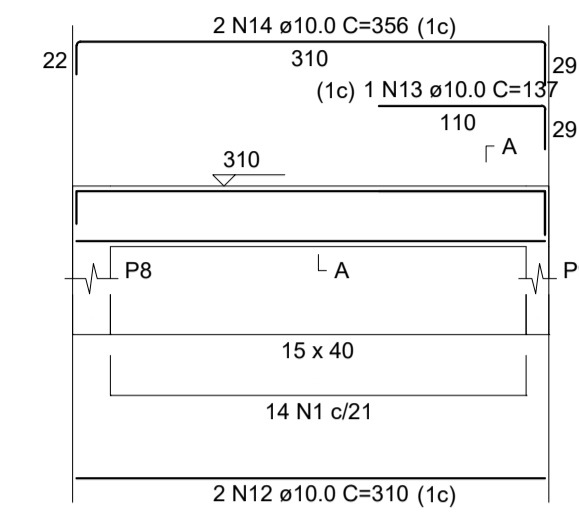
V201
ESC 1:50



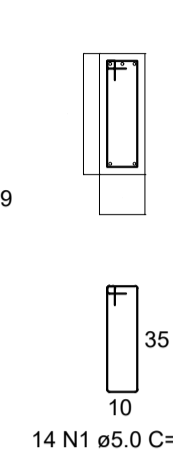
SEÇÃO A-A
ESC 1:25



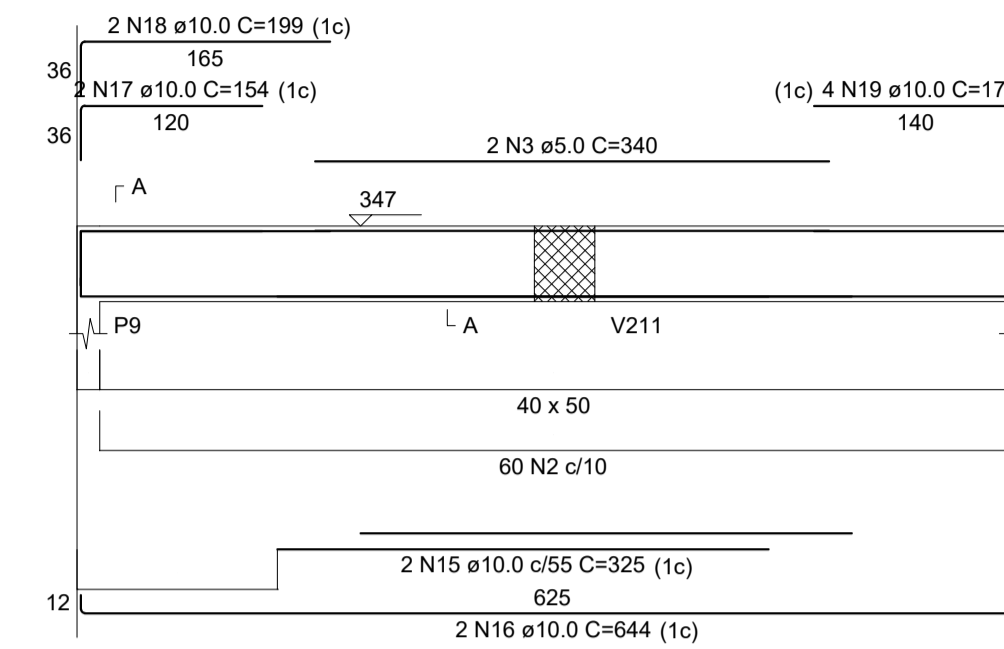
V202
ESC 1:50



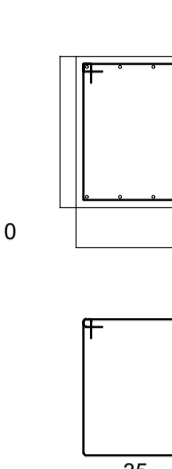
SEÇÃO A-A
ESC 1:25



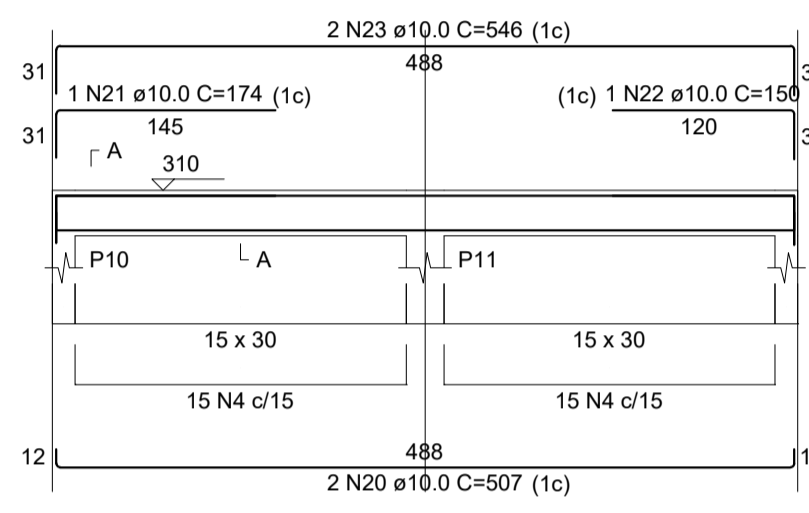
V203
ESC 1:50



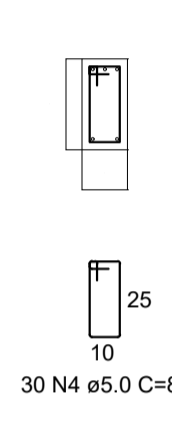
SEÇÃO A-A
ESC 1:25



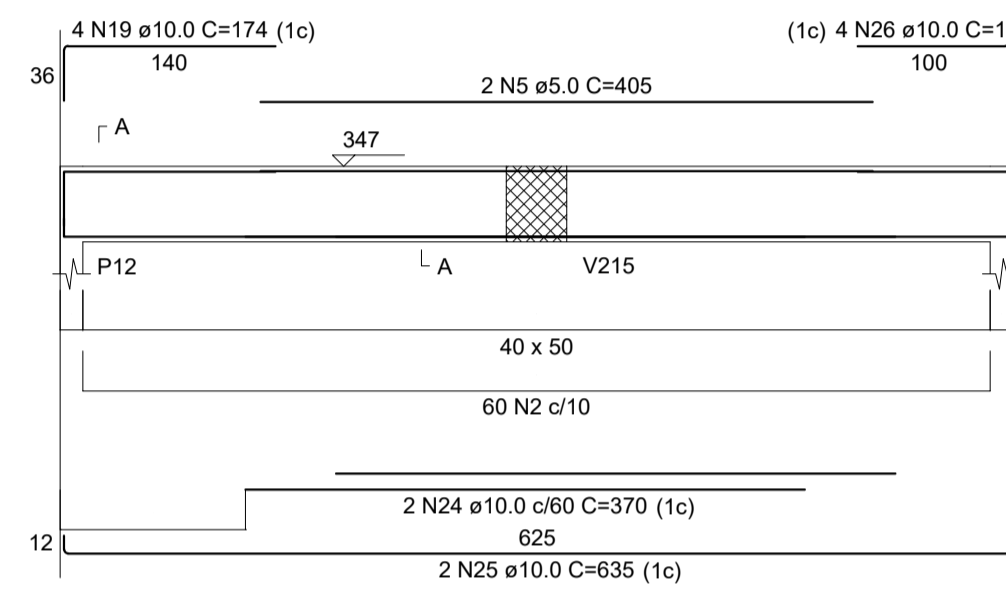
V204
ESC 1:50



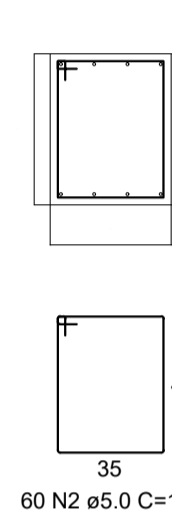
SEÇÃO A-A
ESC 1:25



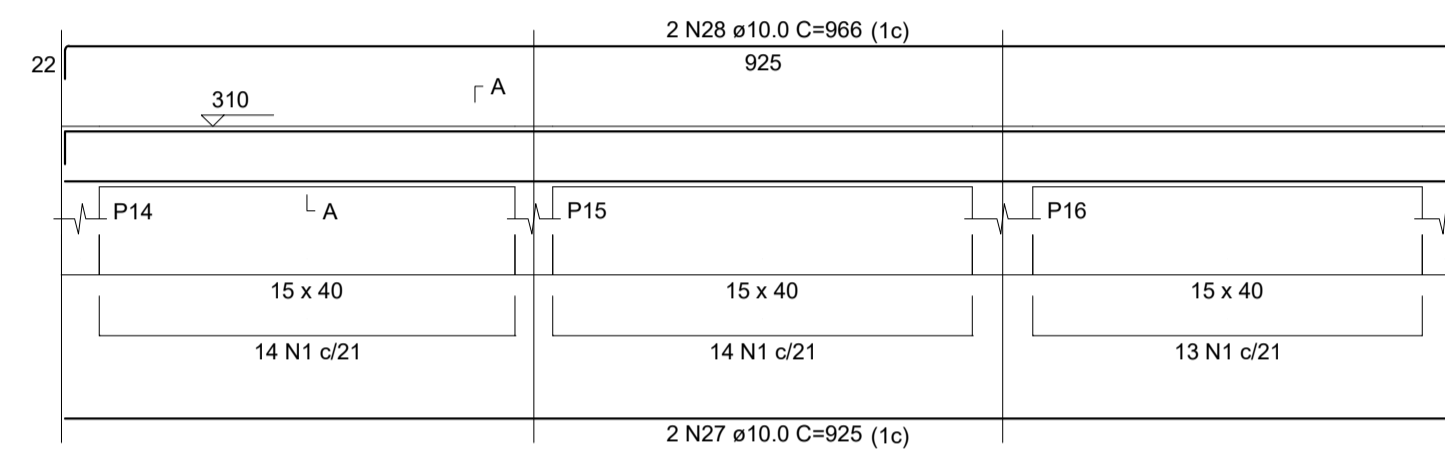
V205
ESC 1:50



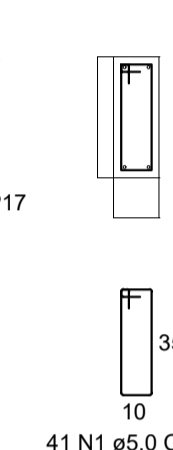
SEÇÃO A-A
ESC 1:25



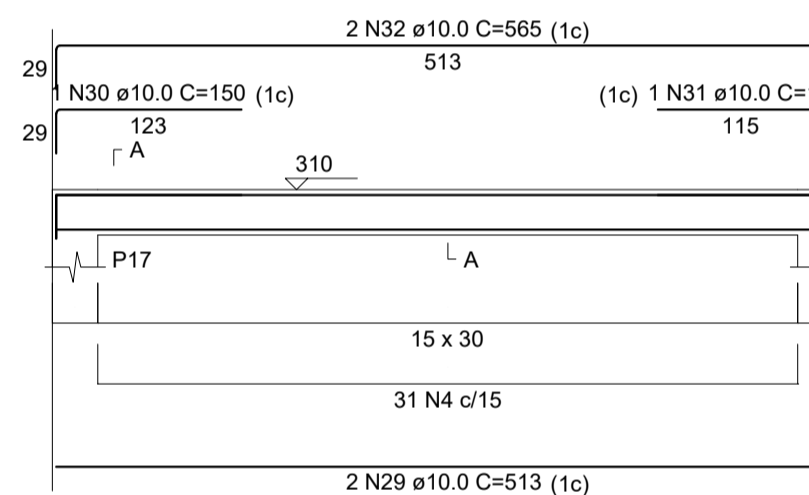
V206
ESC 1:50



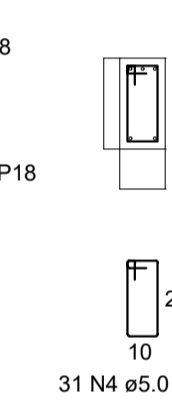
SEÇÃO A-A
ESC 1:25



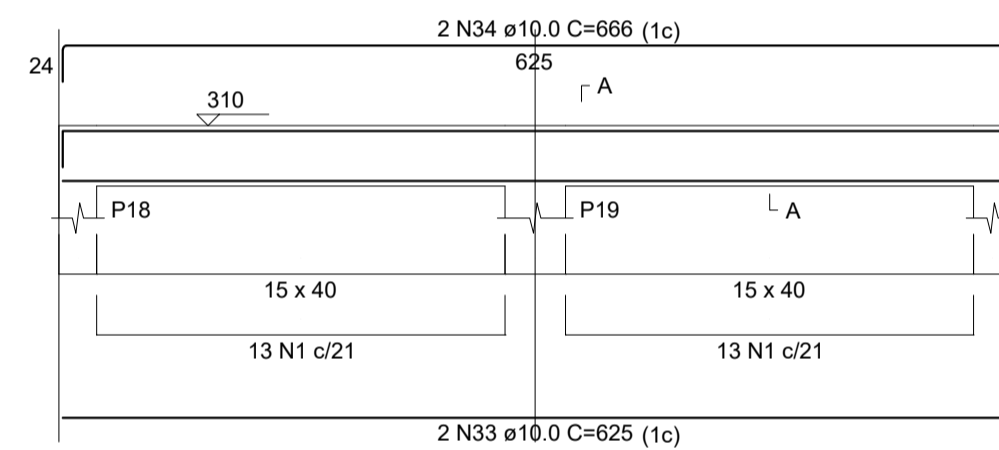
V207
ESC 1:50



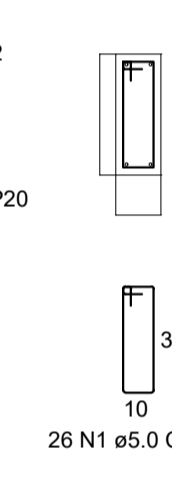
SEÇÃO A-A
ESC 1:25



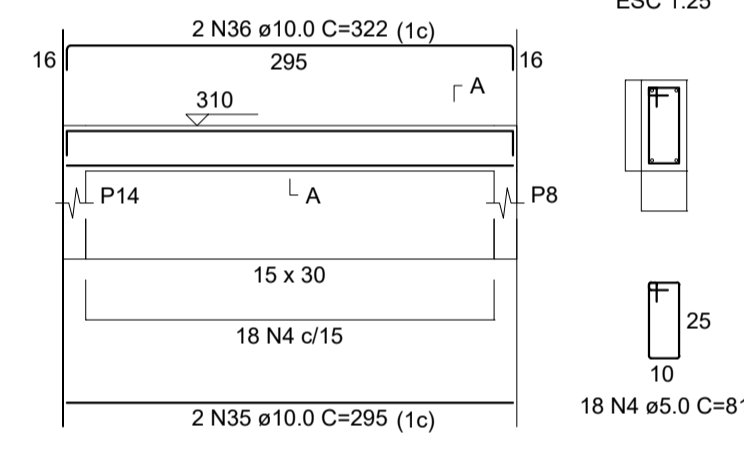
V208
ESC 1:50



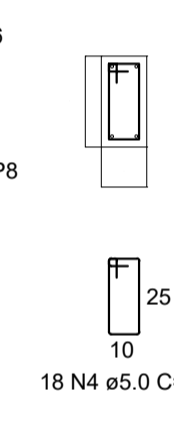
SEÇÃO A-A
ESC 1:25



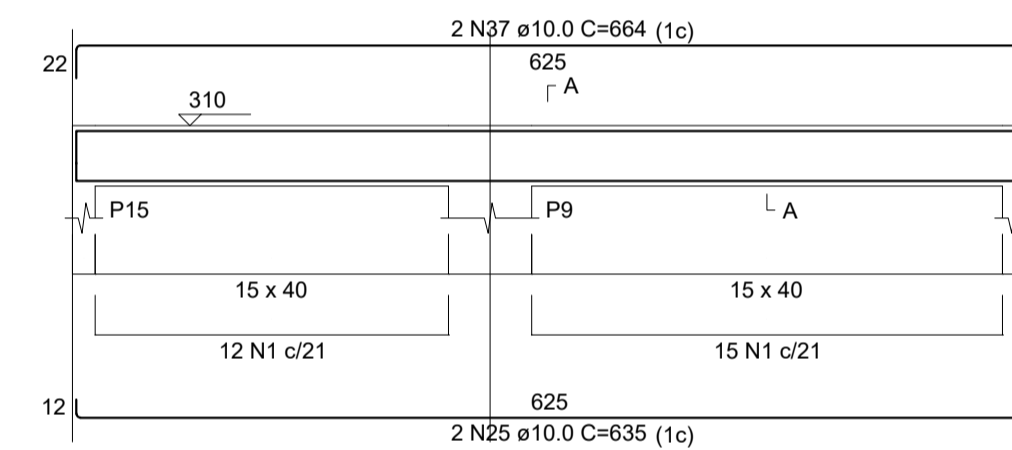
V209
ESC 1:50



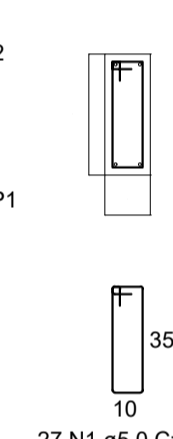
SEÇÃO A-A
ESC 1:25



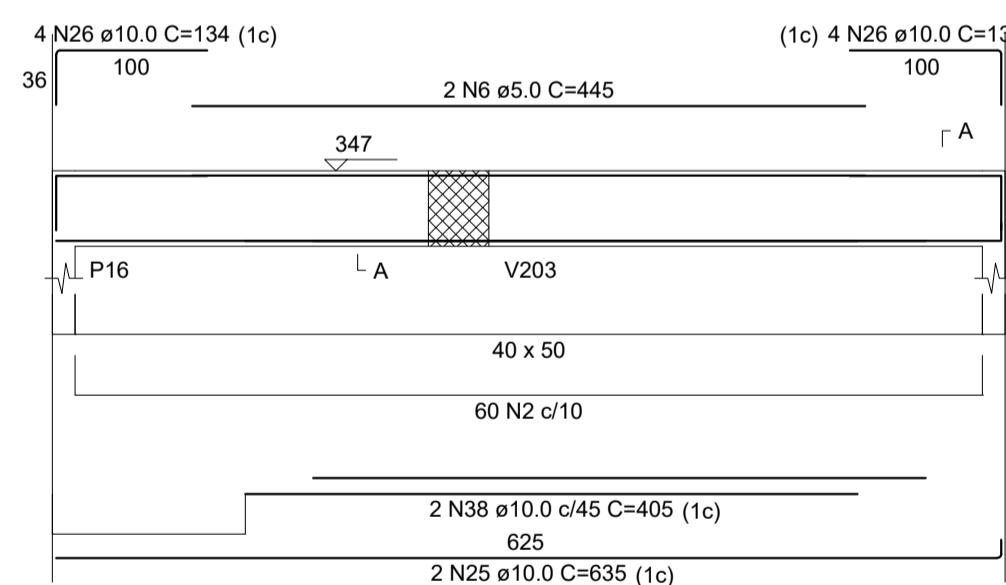
V210
ESC 1:50



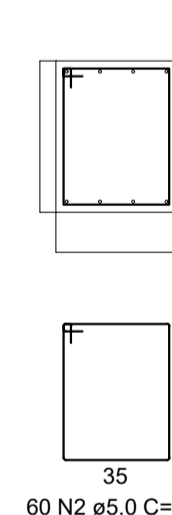
SEÇÃO A-A
ESC 1:25



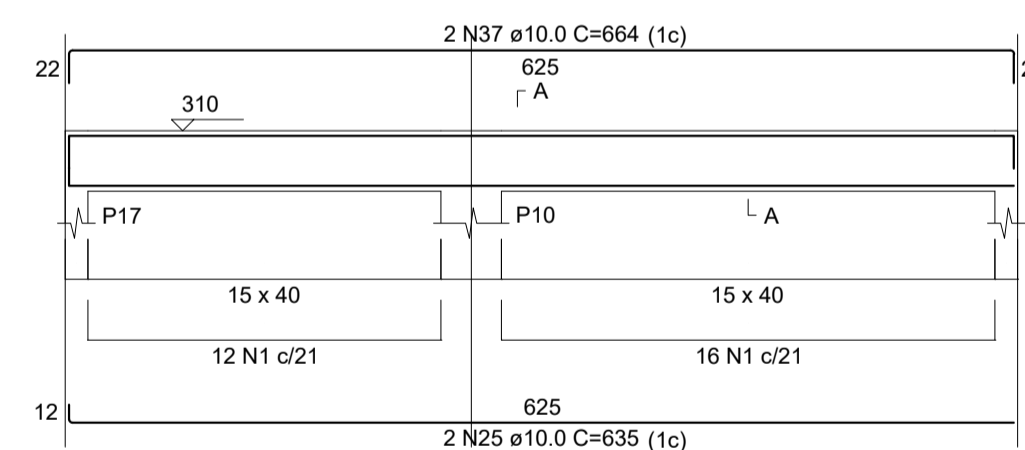
V211
ESC 1:50



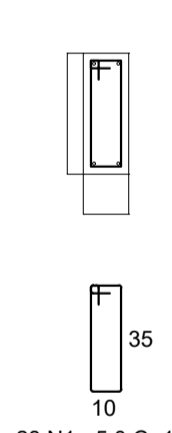
SEÇÃO A-A
ESC 1:25



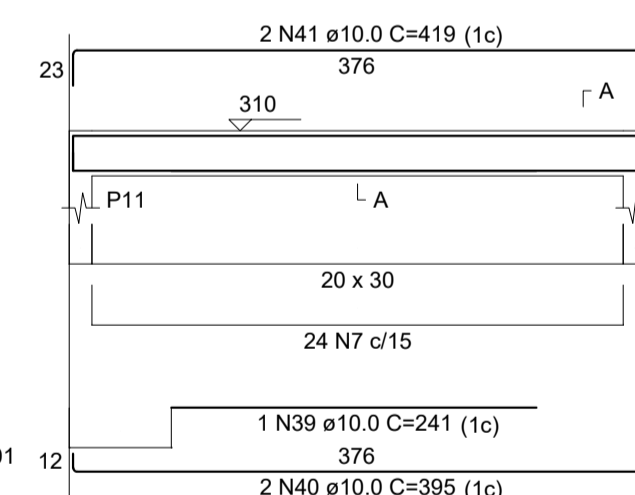
V212
ESC 1:50



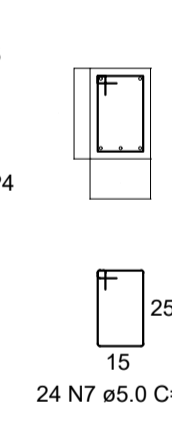
SEÇÃO A-A
ESC 1:25



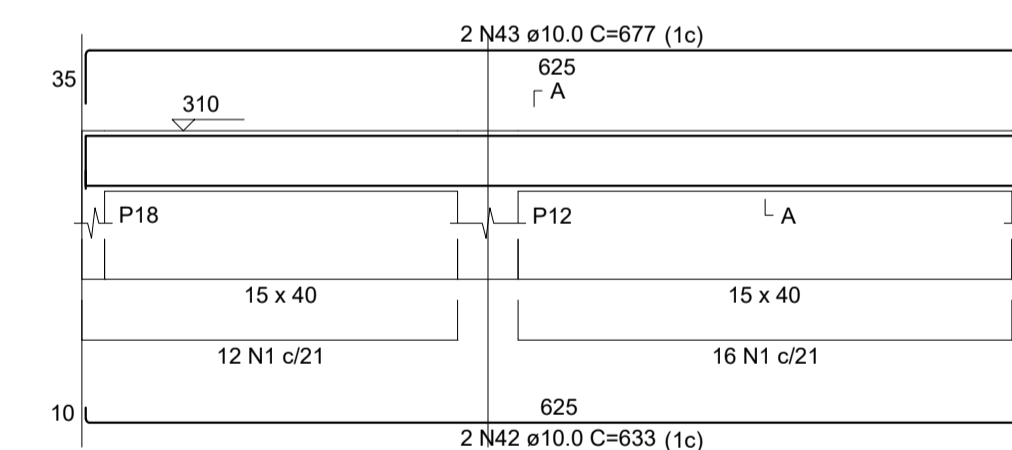
V213
ESC 1:50



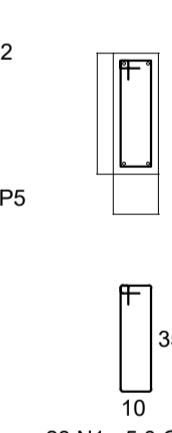
SEÇÃO A-A
ESC 1:25



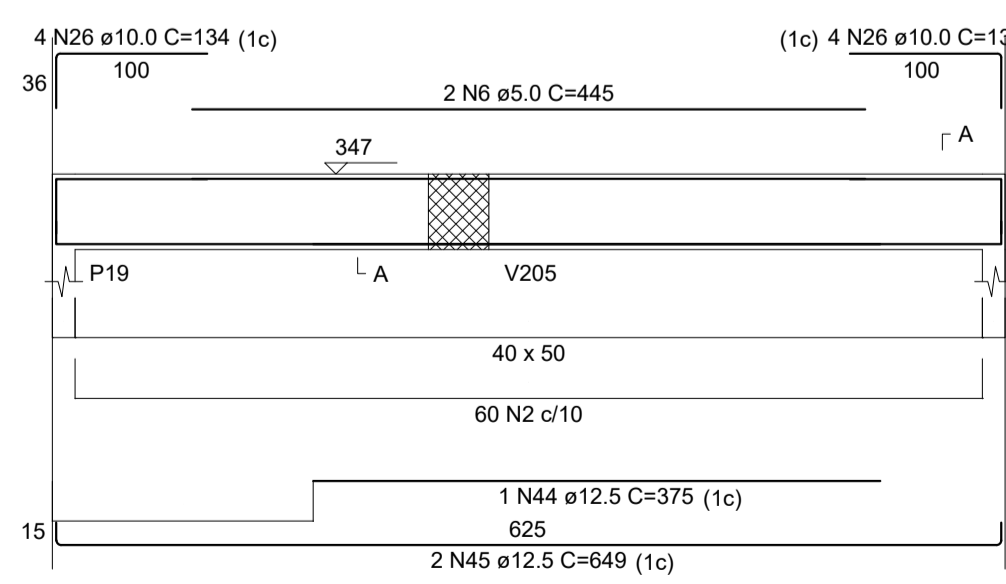
V214
ESC 1:50



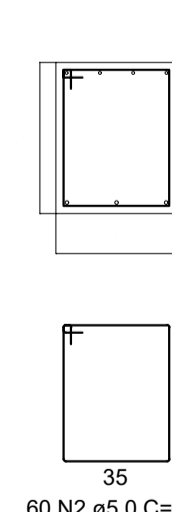
SEÇÃO A-A
ESC 1:25



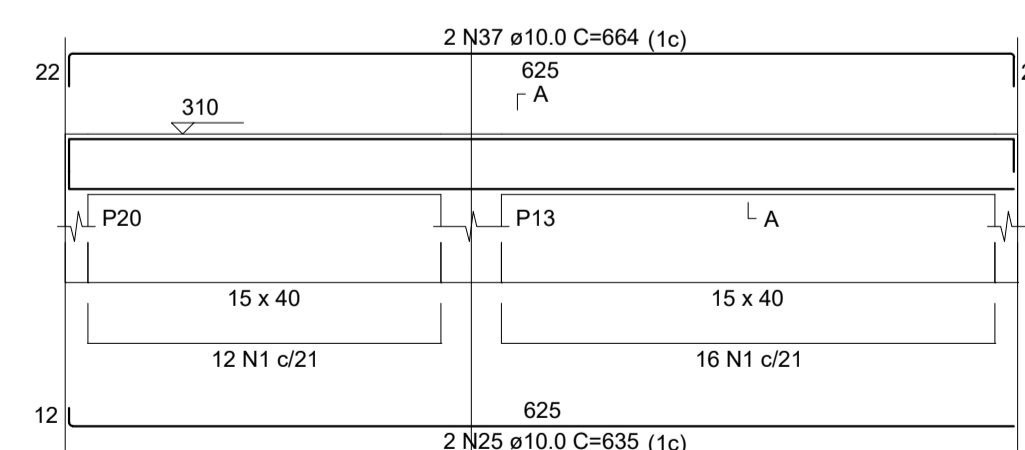
V215
ESC 1:50



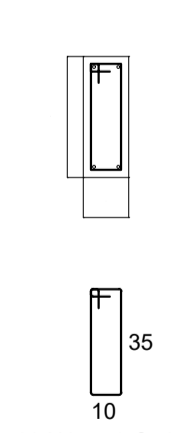
SEÇÃO A-A
ESC 1:25



V216
ESC 1:50



SEÇÃO A-A
ESC 1:25



RELAÇÃO DO AÇO

| AÇO | N | DIAM (mm) | QUANT | C.UNIT (cm) | C.TOTAL (cm) |
|------|----|-----------|-------|-------------|--------------|
| CA60 | 1 | 5.0 | 267 | 101 | 26967 |
| | 2 | 5.0 | 171 | 171 | 41040 |
| | 3 | 5.0 | 2 | 340 | 680 |
| | 4 | 5.0 | 79 | 81 | 6399 |
| | 5 | 5.0 | 2 | 405 | 810 |
| | 6 | 5.0 | 4 | 445 | 1780 |
| | 7 | 5.0 | 24 | 91 | 2184 |
| | 8 | 10.0 | 2 | 1101 | 2202 |
| | 9 | 10.0 | 2 | 613 | 1226 |
| | 10 | 10.0 | 2 | 1198 | 2396 |
| | 11 | 10.0 | 2 | 604 | 1208 |
| | 12 | 10.0 | 2 | 310 | 620 |
| | 13 | 10.0 | 1 | 137 | 137 |
| | 14 | 10.0 | 2 | 356 | 712 |
| | 15 | 10.0 | 2 | 325 | 650 |
| | 16 | 10.0 | 2 | 644 | 1288 |
| | 17 | 10.0 | 2 | 154 | 308 |
| | 18 | 10.0 | 2 | 199 | 398 |
| | 19 | 10.0 | 8 | 174 | 1392 |
| | 20 | 10.0 | 2 | 507 | 1014 |
| | 21 | 10.0 | 1 | 174 | 174 |
| | 22 | 10.0 | 1 | 150 | 150 |
| | 23 | 10.0 | 2 | 546 | 1092 |
| | 24 | 10.0 | 2 | 370 | 740 |
| | 25 | 10.0 | 10 | 635 | 6350 |
| | 26 | 10.0 | 20 | 134 | 2680 |
| | 27 | 10.0 | 2 | 925 | 1850 |
| | 28 | 10.0 | 2 | 966 | 1932 |
| | 29 | 10.0 | 2 | 513 | 1026 |
| | 30 | 10.0 | 1 | 150 | 150 |
| | 31 | 10.0 | 1 | 141 | 141 |
| | 32 | 10.0 | 2 | 565 | 1130 |
| | 33 | 10.0 | 2 | 625 | 1250 |
| | 34 | 10.0 | 2 | 666 | 1332 |
| | 35 | 10.0 | 2 | 295 | 590 |
| | 36 | 10.0 | 2 | 322 | 644 |
| | 37 | 10.0 | 6 | 664 | 3984 |
| | 38 | 10.0 | 2 | 405 | 810 |
| | 39 | 10.0 | 1 | 241 | 241 |
| | 40 | 10.0 | 2 | 395 | 790 |
| | 41 | 10.0 | 2 | 419 | 838 |
| | 42 | 10.0 | 2 | 633 | 1266 |
| | 43 | 10.0 | 2 | 677 | 1354 |
| | 44 | 12.5 | 1 | 375 | 375 |
| | 45 | 12.5 | 2 | 649 | 1298 |

RESUMO DO AÇO

| AÇO | DIAM (mm) | C.TOTAL (m) | PESO + 10% (kg) |
|------|-----------|-------------|-----------------|
| CA50 | 10.0 | 440.7 | 298.8 |
| CA60 | 12.5 | 16.7 | 17.7 |
| CA60 | 5.0 | 798.6 | 135.4 |

PESO TOTAL (kg)

CA50 316.6

CA60 135.4

Volume de concreto (C-25) = 8.76 m³

Área de forma = 106.28 m²

PREFEITURA MUNICIPAL DE FORMIGA
C.N.P.J.: 16.784.720/0001-25
Secretaria de Obras e Trânsito
(37) 3329-1846
secretaria@saobrasetransito@gmail.com
Rua: Barão de Piumhi, nº 121
Centro - Formiga | MG - Cep: 35570-000

Titulo:
PROJETO ESTRUTURAL – CORPO PRINCIPAL

Finalidade: AMPLIAÇÃO CENTRO DE EDUCAÇÃO INFANTIL
CONCEIÇÃO MARIA DE ALMEIDA

Detalhes:
VIGAS

Endereço Obra/Serviço:
AV. DR. TEIXEIRA SOARES, 1120, BAIRRO ENGENHO DE SERRA

Resp. Técnico:
EUGÊNIO VILELA JUNIOR
PREFEITO MUNICIPAL DE FORMIGA

Quadro de Áreas:
ÁREA DO CORPO PRINCIPAL = 154,94 m²
TOTAL = 154,94 m²
ÁREA TOTAL RESIDÊNCIA: 154,94m²

Protocolo: Aprovação: Visto:

Escala: INDICADA Desenho: LORENA ARANTES Data: MAIO/2022 Prancha: 04 / 05