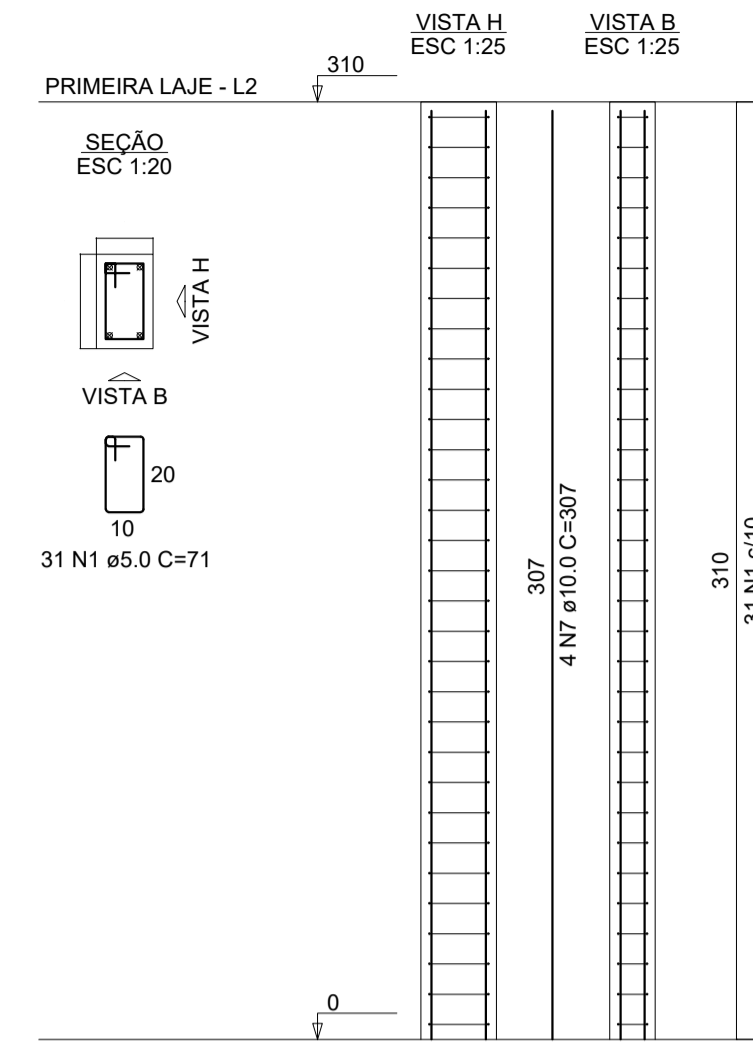
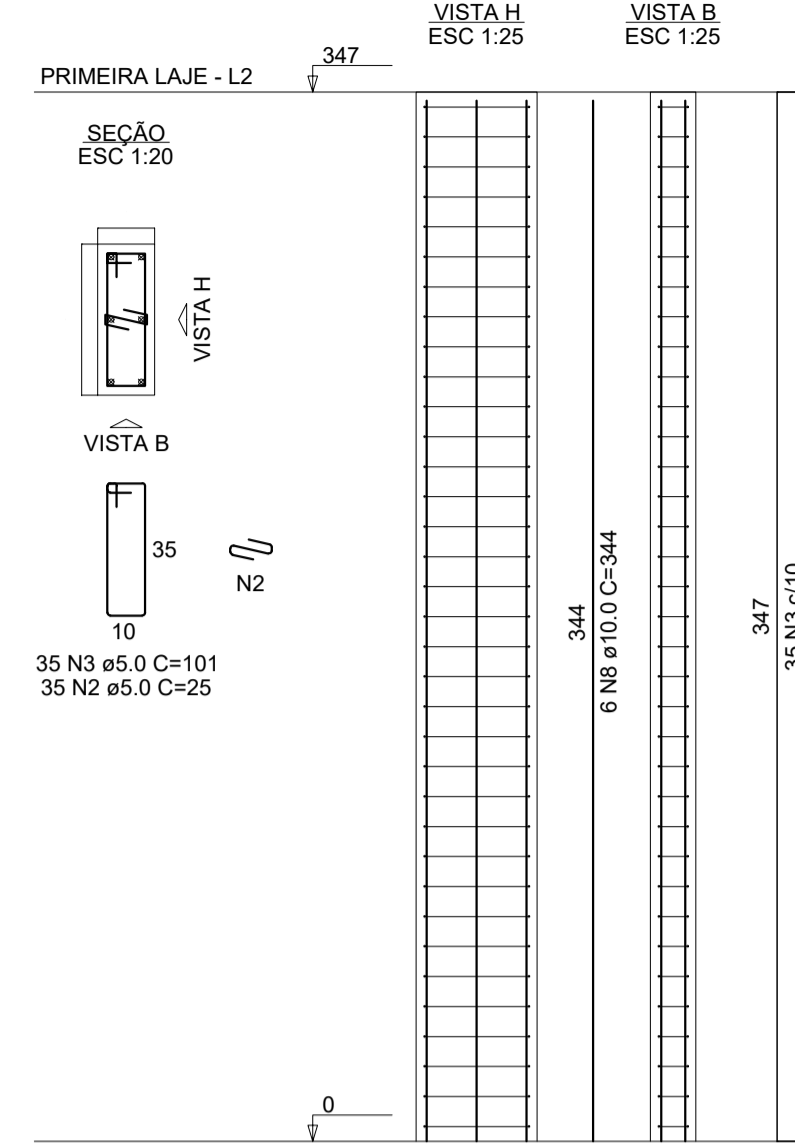


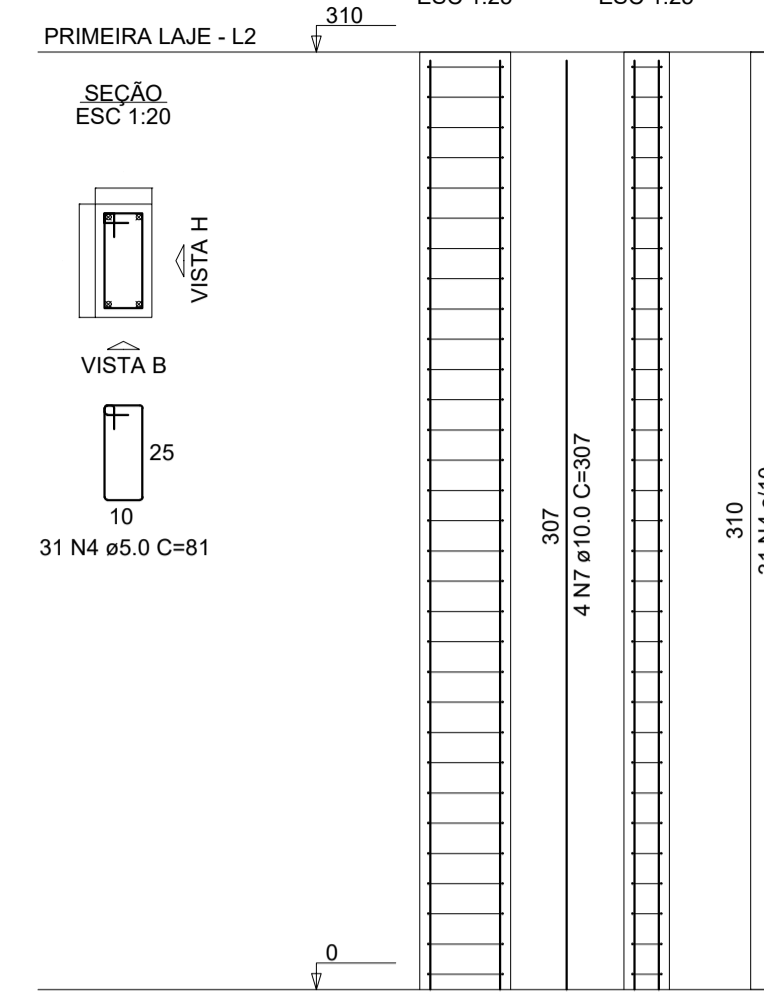
P1=P5=P7=P8=P14=P15=
=P18=P20



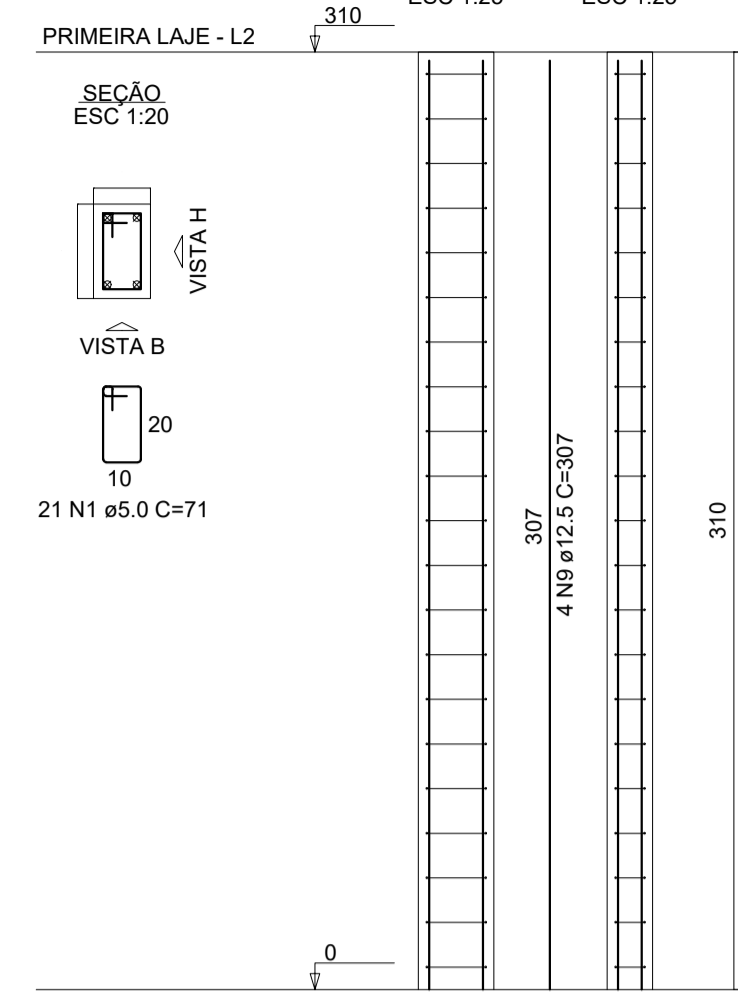
P2=P10=P12=P13=P16=P19



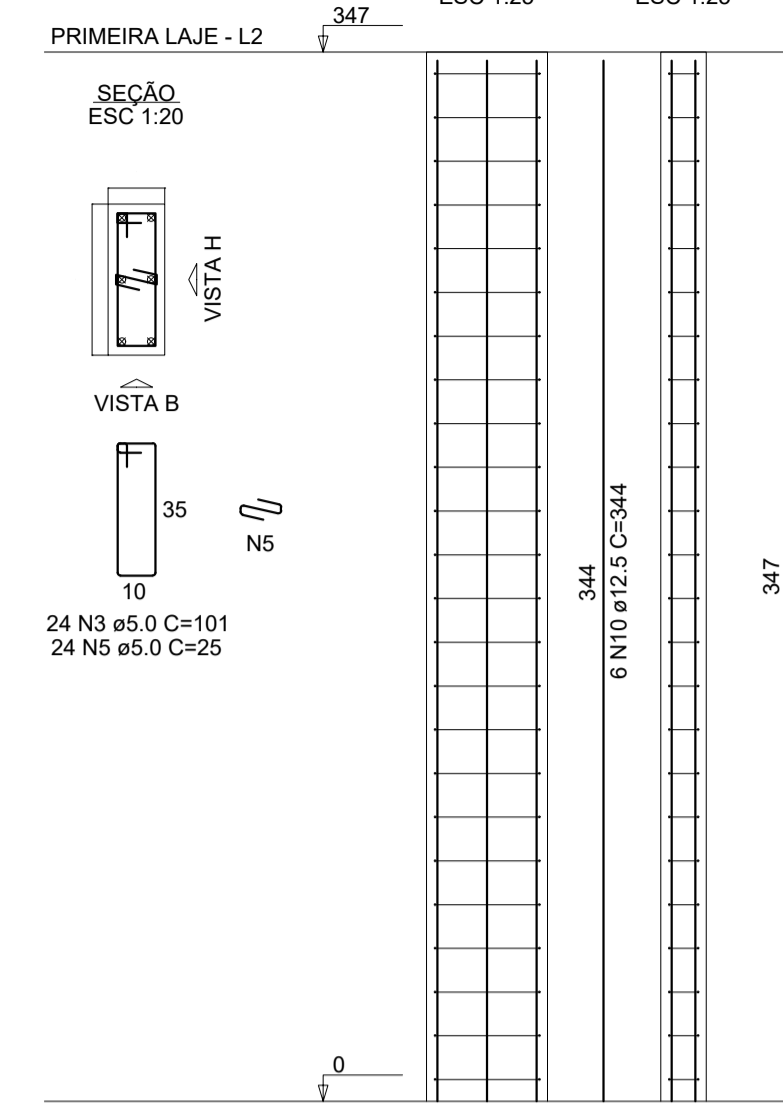
P3=P17



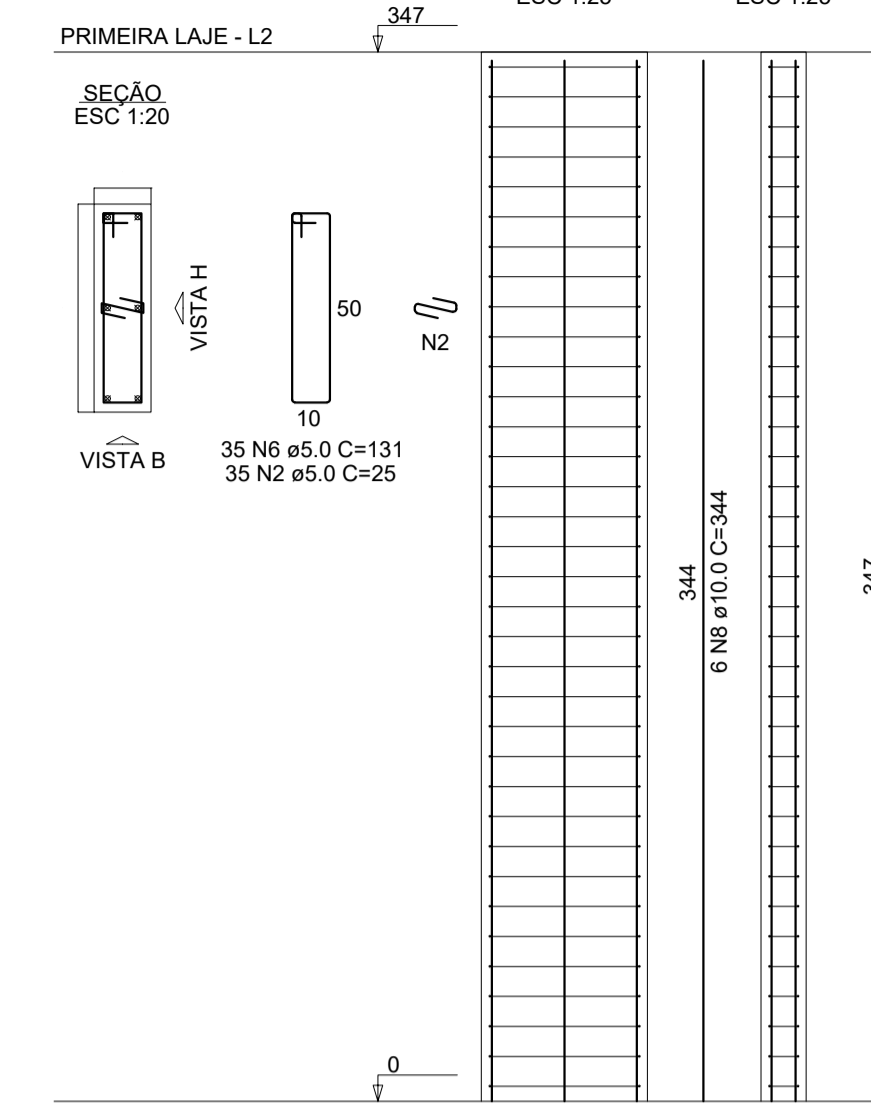
P4



P6



P9



RELAÇÃO DO AÇO

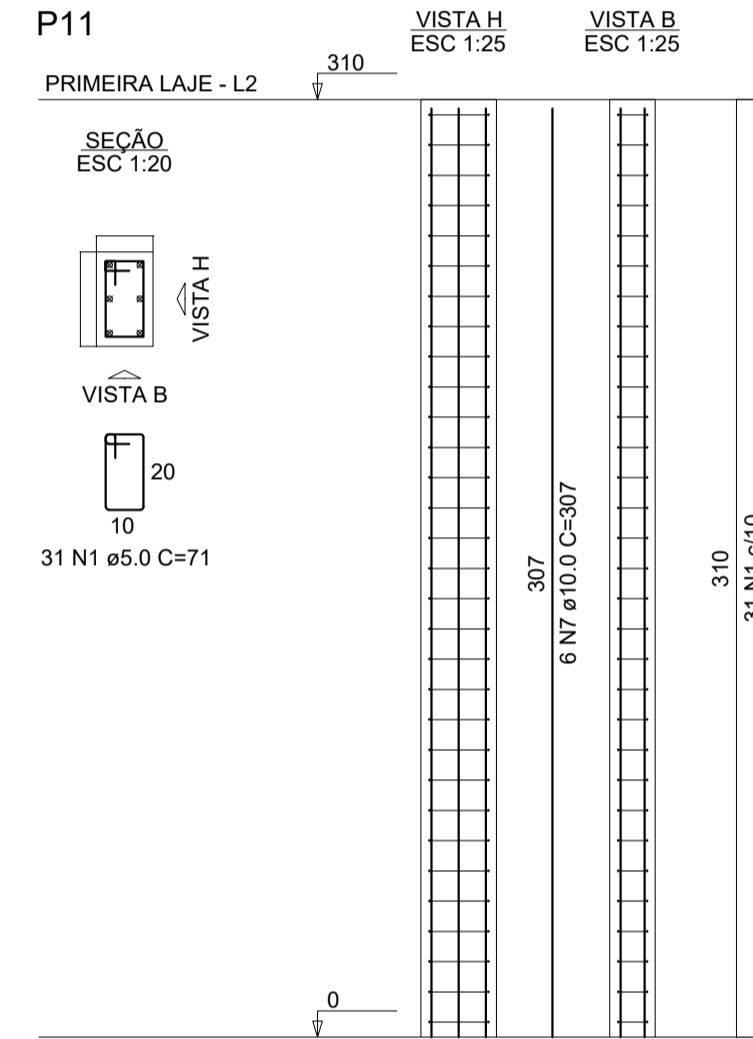
8xP1 P4 P11	6xP2 P6	2xP3 P9			
AÇO	N	DIAM (mm)	QUANT	C.UNIT (cm)	C.TOTAL (cm)
CA60	1	5.0	300	71	21300
	2	5.0	245	25	6125
	3	5.0	234	101	23634
	4	5.0	62	81	5022
	5	5.0	24	25	600
CA50	6	5.0	35	131	4585
	7	10.0	46	307	14122
	8	10.0	42	344	14448
	9	12.5	4	307	1228
	10	12.5	6	344	2064

RESUMO DO AÇO

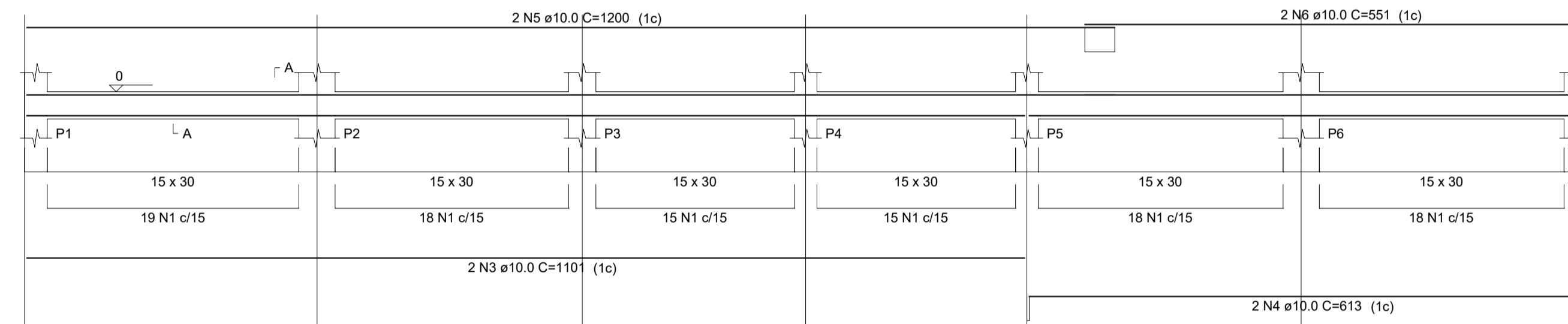
AÇO	DIAM (mm)	C.TOTAL (m)	PESO + 10% (kg)
CA50	10.0	285.7	193.8
CA60	5.0	612.7	34.9
PESO TOTAL (kg)			228.6
CA50			228.6
CA60			103.9

Volume de concreto (C-25) = 3.19 m³
Área de forma = 61.96 m²

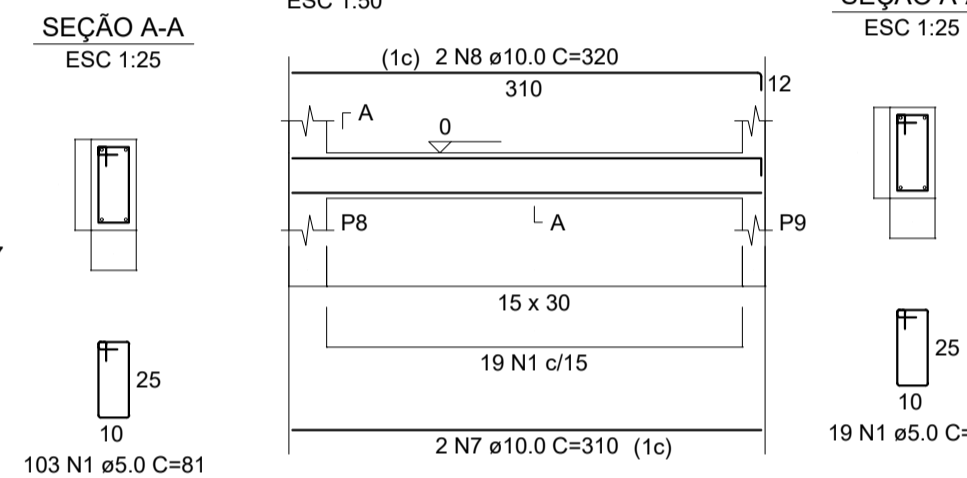
P11



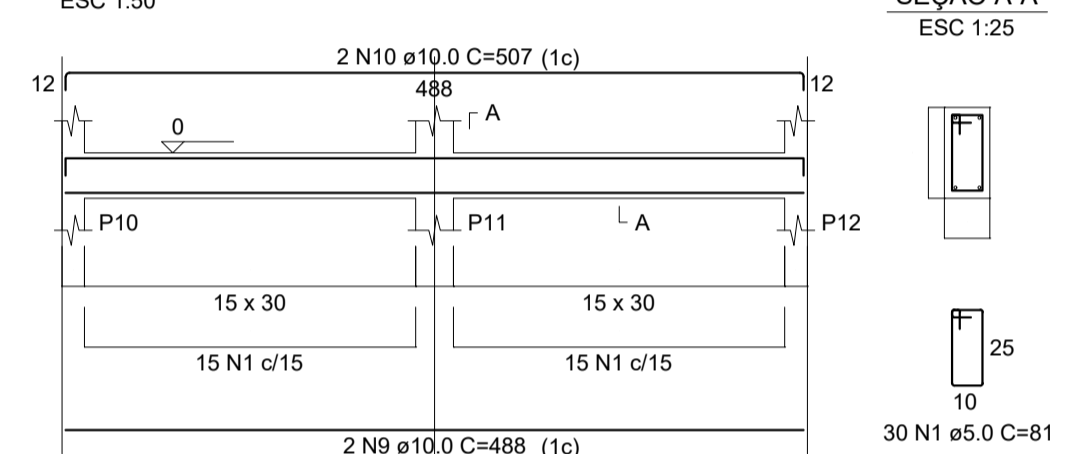
VFUND101
ESC 1:50



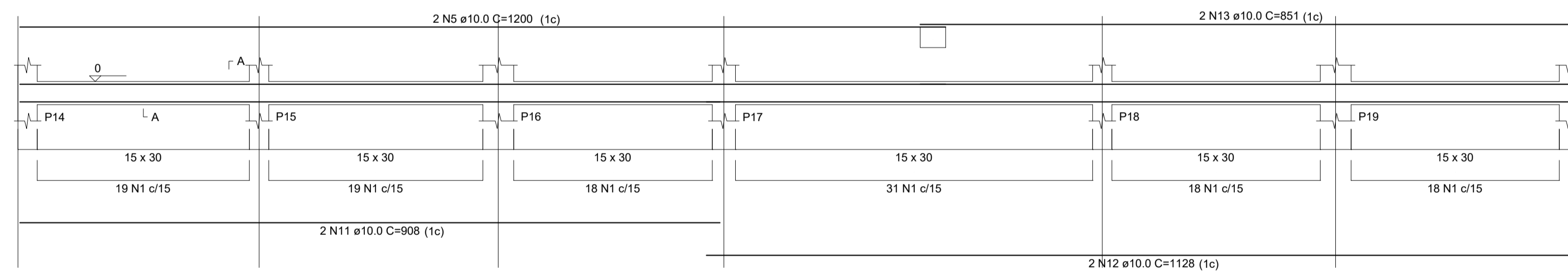
VFUND102
ESC 1:50



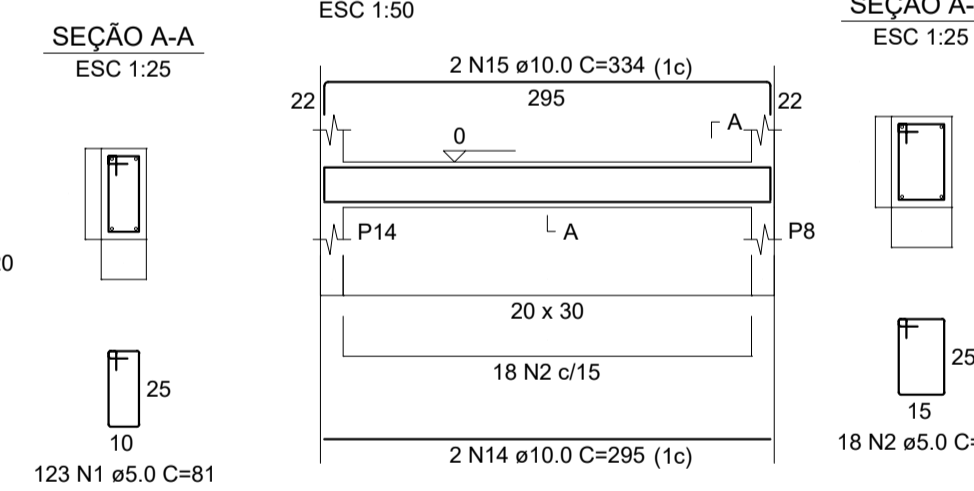
VFUND103
ESC 1:50



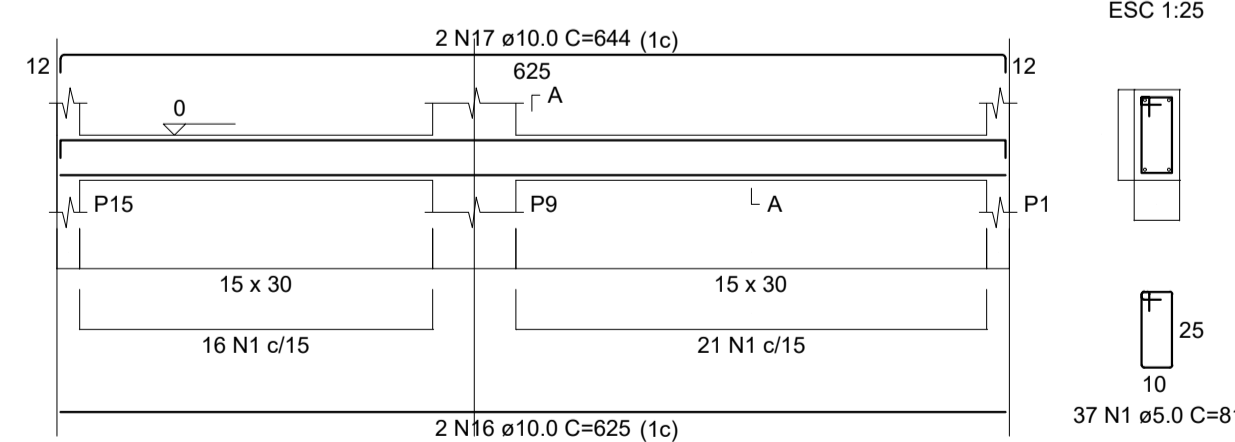
VFUND104
ESC 1:50



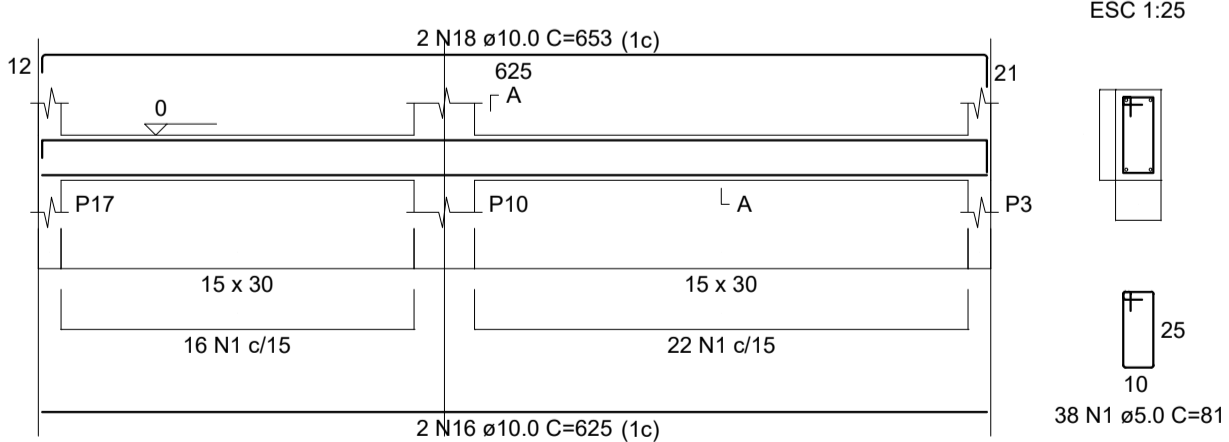
VFUND105
ESC 1:50



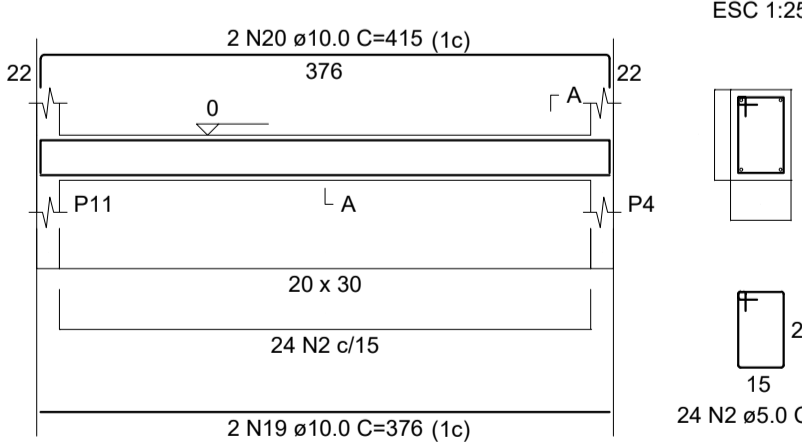
VFUND106
ESC 1:50



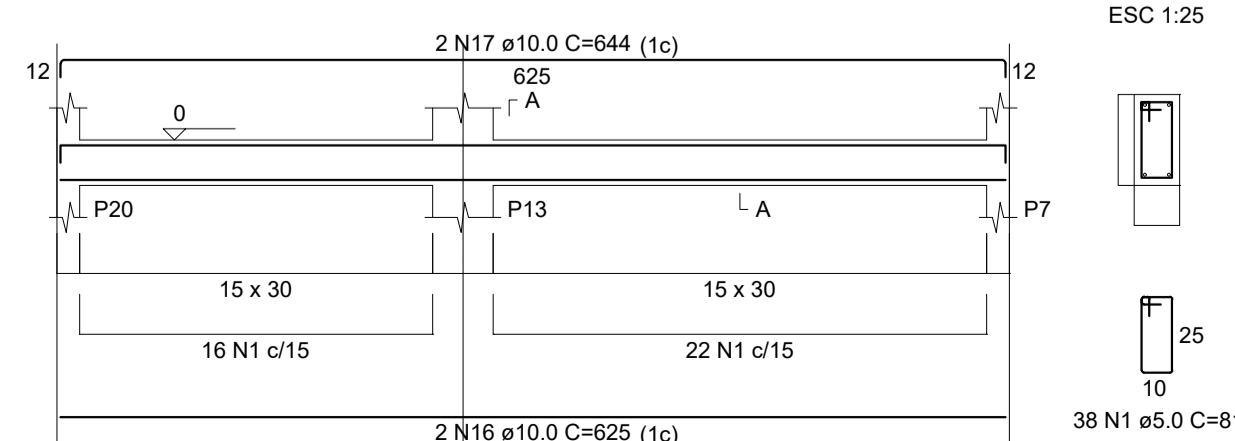
VFUND107
ESC 1:50



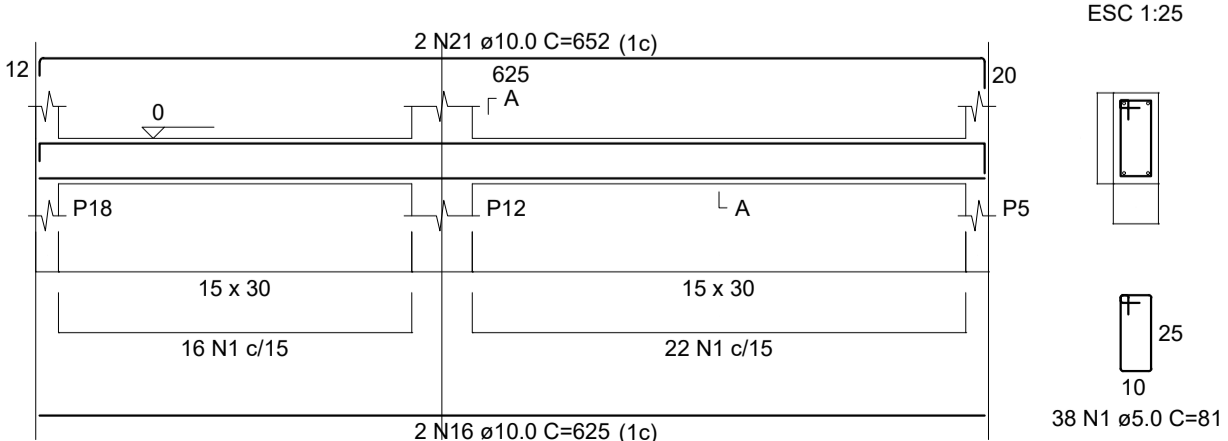
VFUND108
ESC 1:50



VFUND110
ESC 1:50



VFUND109
ESC 1:50



RELAÇÃO DO AÇO

AÇO	N	DIAM (mm)	QUANT	C.UNIT (cm)	C.TOTAL (cm)
CA60	1	5.0	426	81	34506
	2	5.0	42	91	3822
	3	10.0	2	1101	2202
	4	10.0	2	613	1226
	5	10.0	4	1200	4800
	6	10.0	2	551	1102
	7	10.0	2	310	620
	8	10.0	2	320	640
	9	10.0	2	488	976
	10	10.0	2	507	1014
	11	10.0	2	908	1816
	12	10.0	2	1128	2256
	13	10.0	2	851	1702
	14	10.0	2	295	590
	15	10.0	2	334	668
	16	10.0	8	625	5000
	17	10.0	4	644	2576
	18	10.0	2	653	1306
	19	10.0	2	376	752
	20	10.0	2	415	830
	21	10.0	2	652	1304

RESUMO DO AÇO

AÇO	DIAM (mm)	C.TOTAL (m)	PESO + 10% (kg)
CA50	10.0	313.8	212.8
CA60	5.0	383.3	65
PESO TOTAL (kg)			277.8
CA50			212.8
CA60			65

Volume de concreto (C-25) = 3.19 m³
Área de forma = 58.51 m²

PREFEITURA MUNICIPAL DE FORMIGA
C.N.P.J.: 16.784.720/0001-25
Secretaria de Obras e Trânsito
(37) 3329-1846
secretariafaoobrasetransito@gmail.com

Rua: Barão de Plumhi, nº 121
Centro - Formiga | MG - Cep: 35570-000

Titulo:
PROJETO ESTRUTURAL – CORPO PRINCIPAL
Finalidade: AMPLIAÇÃO CENTRO DE EDUCAÇÃO INFANTIL
CONCEIÇÃO MARIA DE ALMEIDA
Detalhes:
VIGAS BALDRAME
Endereço Obra/Serviço:
AV. DR. TEIXEIRA SOARES, 1120, BAIRRO ENGENHO DE SERRA

EUGÊNIO VILELA JUNIOR
PREFEITO MUNICIPAL DE FORMIGA

Resp. Técnico:
LORENA DE PAIVA ARANTES
ENGENHEIRA CIVIL – CREA MG: 234.399/D

Quadro de Áreas:
ÁREA DO CORPO PRINCIPAL = 154,94 m²
TOTAL = 154,94 m²
ÁREA TOTAL RESIDÊNCIA: 154,94m²

Protocolo: Aprovação: Visto:

Escala: INDICADA
Desenho: LORENA ARANTES
Data: MAIO/2022
Prancha: 03 / 05